

CLASS FLOWERS: Pink Roses and White Carnations
CLASS COLORS: Pink and White
SCHOOL COLORS: Maroon and White

CLASS MOTTO: "Nothing great was ever achieved, without enthusiasm."

TOP TEN MEMORIES

1. Winston Churchill died
2. Sukarno pulls Indonesia out of United Nations
3. Junior Class won 1st. place for their float, breaking the Class of 65's four year streak.
4. The Mayville Band received all 1's in District
5. The Gemini Space Program was a success
6. Harold Wilson is new Prime Minister in London
7. Khrushchev is resigned as Premier of Russia and Kosygin and Brezhnev are in office
8. A civil march from Selma, Alabama to the Capital 50 miles away
9. Best Movie of the year "My Fair Lady"
10. Best Actor was Rex Harrison; Best Actress was Julie Andrews



SUSAN GOHS

"Keen sense, and common sense, and lots of room for non-sense."
Cheerleading 1-4, N.H.S. 3,4, Jr. Play 3, Band 1-3, Pep Band 1,2, D.A.R. President of Class 2,4, Sec. of S.C. 2, Exchange Student to Finland 3.



SHEILA KITCHEN

"She's full of fun and mischief, too, she's always up to something new!"
F.H.A. 1, Nurses Club 1, Student Council 1-4, Band 1-4, Pep Band 1-3, N.H.S. 3-4, Drum Major 2, Majorette 3,4, Sr. V.P. Jr. V.P., Soph. S.C. Rep.



TERRY TERBUSH

"Have fun while you're alive, cause you'll be dead a long time!"
Secr. of 11 & 12 grade, 9th Pres., S.C. 1, Football 1-4, T.T.C. 2-4, Varsity Club 3,4, Baseball 1-4.



GALE LANGFORD

"Excuse me, I've got a date with success!"
Football Manager 1,2, Varsity Club 2-4, Jr. Play 3, Sr. Play 4, Draftsman Club 2,3, Pres. in 4, Class Treas. 3,4, N.H.S. Treas 4



JOHANNA KLOCKER

"Some think she is quiet; others know better."
Sr. & Jr. Play, S. C. Repr. 4, F.T.C. 3,4, Treas. N.H.S. 3,4.



SHELLEY ALFANO

"With charm and personality, she's a dream in reality."
Annual Staff 4, N.H.S. 3-4, Jr. High, Jr. Varsity Cheerleader, Jr. Sr. Play, Queen of 11th grade.

SHIRLEY MAE BAILEY

"Sincere in everything she does!"
F.H.A. 2, Glee Club 1,3, Nurses Club 1, Library 1.

PAT BELLAMY

"Keep smiling, it makes everybody wonder what you've been up to."

LARRY BERLIN

"Flirty, Flirty guy with flirty, flirty eyes!"

GARY BLASIUS

"His smile is for girls to trip on!"





BLAIR BRISTOL
 "Leave undone whatever you
 hesitate to do"
 Draftsman Club 2-4.



BRIAN BRISTOL
 "I'd rather be small and shine,
 than to be large and cast a
 shadow."



RONALD G. CLARK
 "Haste makes waste-move
 slowly"
 Bible Club 4.



LARRY R. CLINK
 "He's true to one (one
 at a time)"
 Football 1-4, Basketball
 2, track 2, Draftsman Club
 2-4, Jr. & Sr. Play.



RUTHANN DAVIDSON
 "Happy is the heart that
 sighs for only one"
 Band and Pep Band 2-4,
 Glee club 1, Sr. Play 4,
 Nurses Club 2,3.



JOHN DAVIS
 "Gentlemen always seem
 to remember blondes."
 Football 1,2, Sr. Play 4,
 Draftsman Club 3, Class
 Vice Pres. 2, S.C. 2,3,
 S.C. Rep. 3, Treas. of
 S.C. 3

PATRICIA LEIGH DAVISON
 "We know little of her, but
 what we know is good"
 Glee Club 3, F.T.C. 1.

ELAINE DEGROW
 "Politeness costs nothing and
 gains everything"
 Band 1-4, Pep Band 4, Nurses
 Club 2-3, Library Club 1.

DAVID ZAE DICKIE
 "Thinking is but an idle waste
 of thought"
 Football 1-4, Track 1, Varsity
 Club 2-3, F.F.A. 1-4 Jr. Play.

RONALD G. DOST
 "He has a difficulty for every
 solution"
 Football 1-3, Baseball 4,
 F.F.A. 1-4, Track 1, Band
 1,2, Band 1,2, Pep Band 1-2,
 Draftsman Club 3,4, Sr. &
 Jr. Play.





PAT L. DUNCAN
 "I do not know what education could do because I've never tried it."
 Football 2,4, Basketball 1-4, Baseball 1-3, Draftsman Club 2-4, Varsity Club 4, Jr. & Sr. Play.



PENNY FAIRFIELD
 Success will be hers through diligence and Integrity"
 Band 1-4, Pep Band 1-4, Jr. & Sr. Play, S.C. 1, Nurses Club 1, N.H.S. 3,4.



DIANA FERGUSON
 "The difficult I do immediately, the impossible takes a little longer."
 F.H.A. 1,2, F.T.C. 2-4, School Newspaper 2, N.H.S. 3-Jr. & Sr. Play, Nurses Club 4.



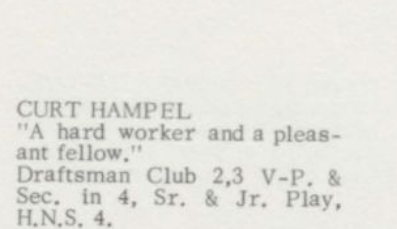
SHARON ANN FORD
 "Generally speaking - she is generally speaking."
 F.H.A. 1-4, Library Club 1, Glee Club 1-3, Nurses Club 2, Jr. Play, Art Club 4.



DANIEL FOWLER
 "An Innocent face, but you never can tell."
 Football 1, Varsity Club 3-4, Baseball 2,3, Basketball 1-3.

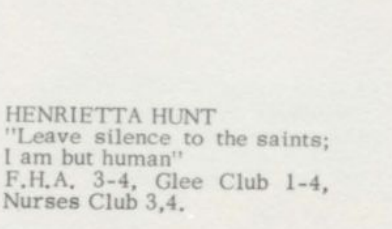


JEAN FRITZ
 "A quiet little girl with a pleasant little way."
 Glee Club 1-2, Nurses Club 3.



SUSANNE KAY GOODELL
 "Tis better to slip with foot than tongue."
 F.H.A. 1,2, Nurses Club 1, Glee Club 1,2,3.

CURT HAMPEL
 "A hard worker and a pleasant fellow."
 Draftsman Club 2,3 V-P. & Sec. in 4, Sr. & Jr. Play, H.N.S. 4.



HENRIETTA HUNT
 "Leave silence to the saints; I am but human"
 F.H.A. 3-4, Glee Club 1-4, Nurses Club 3,4.

LARRY IHRKE
 "The trouble with life is that by the time you know your way around, you usually don't feel like going."
 Football 1-4, Band 1-2, Basketball 1-2, Baseball 1, Track 3, Varsity Club 4, Draftsman Club 3-treas. 4-sergeant of arms, Student Council 3-4 treas.





JEANNE M. IVERSEN
 "Always happy full of fun,
 a sunny smile for everyone."
 F.H.A. 1, Pep Band 1, Band
 1-4, Glee Club 1, Nurses
 Club 2,4.



THERESA KARPINSKI
 "Don't argue---certainly I'm
 right."
 F.T.C. 1-2, 3 Treasurer, 4
 Pres., Band 1-4, Pep Band
 1-4, Library Club 1, Student
 Council 1-3, Art Club 4 Pres.,
 National Honor Society 3-4,
 Freshman V. Pres., Sopho-
 more S. C. R., Junior Pres.



JANIS KENNEDY
 "You have to stay awake to
 make your dreams come
 true."
 Band 1-4, Pep Band 1-4, Li-
 brary Club 1, Glee Club 1,
 Nurses Club 1-3, Art Club
 4.



PATRICIA A. KONTAK
 "Don't blame me, blame my
 eyes and my smile."
 F.H.A. 1-4, F.T.C. 3, Band
 1-4, Pep Band 2-4, Library
 Club 1, Glee Club 1, Art
 Club 4, N.H.S. 3,4.



JO ANN KOWALSKI
 "She is always cheerful and
 never blue; some people are
 that way, but very few."
 Nurses Club 1-4, N.H.S. 3,
 4.



ALVIN F. LOUKS
 "Don't you laugh; the big
 oak was a little nut first."
 Baseball 1, Draftsman Club
 4.

PHILLIP MALLOY
 "Friends, Romans, Country-
 men, lend me your girls."
 Football 1-3, Basketball 1,
 Track 1,2, Varsity Club 3,
 4, Band 1-4, Draftsman Club
 3,4.

NANCY MARLOW
 "Chitter, Chatter, Every-
 where, you can tell when
 Nancy's there."
 Band 1-4, Pep Band 1-4,
 Nurses Club 1-3, Treas. 4
 President, Sr. Play 4.

LOIS MCKENZIE
 "Quiet, but subject to violent
 outbursts of giggles."
 F.H.A. 1,2,4, F.T.C. 3,4, Band
 1-4, Pep Band 1, Library
 Club 1, N.H.S. 3,4.

BETTY LOU MEYER
 "Honesty is the best policy."
 Glee Club 1-3, Nurses Club
 3.





CINDY MORODAN

"And the best of all ways to lengthen our days is to steal a few hours from the night."
Band 1-4, Pep Band 1-4, Nurses Club 2, Sr. Play 4, Jr. Play 3, Minstrel Show 1-4.



PAUL NAUGLE

"A poor excuse is better than none."
Football 1,2,4, Baseball 4, Track 4, Varsity Club 4, Draftsman Club 2,3,4.



GLENDA LEE O'BRIEN

"Sober but not serious, quiet but not idle."
Glee Club 1,2,3.



GARY OSOWSKI

"Those who say the least are often the wisest."
Football 4, Basketball 1-4, Baseball 4, Track 1-4, F.F.A. 1-4, V. Pres. 3,4.



RALPH PFAUF

"Still water runs deep and mischief does too!"
Football 2.



LYLE PHELPS

"About Lyle we can say, He fits the bill most any way."
F.F.A. 1-4.

GEORGIANA LIN PICKENS

"From the day that you're born, till you ride in the hearse, there's nothing so bad that it can't be worse."
F.H.A. 1,2, Glee Club 1-3, Nurses Club 2,3.

JIM PLAIN

"Football shoulders, handsome man, the girls' ideal----- a real he-man."
Football 1-4, Basketball 1-4, Baseball 1-4, Track 1-4, Varsity Club 1-3, 4 Pres., F.F.A. 1-2, Draftsman Club 2-3, Junior Play 3, Class Secretary 1-2.

PAULA RADER

"A man may have his will, but a woman has her way."
F.H.A. 1, Band 1-4, Pep Band 2-4, Library Club 1, Glee Club 1.

MICHAEL RAYMOND

"Do unto others before they do unto you."
Draftsman Club 4.





KAY RICHMOND
 "It's nice to be important,
 but its important to be nice."
 F.H.A. 1, Band 1, Nurses
 Club 3,4, Jr. Play 3.



KEN ROBINSON
 "He's full of fun and frolic too,
 doing things he shouldn't do."
 Baseball 2.



CAROLYN SCHAFER
 "Fun and mischief are her chief
 companions."
 F.T.C. 2,3, Sec. 4, V. Pres.
 Band 2-4, Pep Band 3,4, Glee
 Club 1, Sr. Play 4, N.H.S.
 V. Pres. 3; Pres. 4.



LARRY SCHNEIDT
 "Never has a lot of say,
 friendly in his own way."
 Track 1-4, Varsity Club 4,
 F.F.A. 1-3.



NANCY SEBERT
 "May peace and happiness
 be your lot, as down the path
 of life you trot."
 Band 1-3, Glee Club 1-3.



MARIE RITA SEELYE
 "She has the power of
 her own conviction."
 F.H.A. 1-3, F.T.C. 1-4,
 Band 1-4, Library Club
 1, Glee Club 1, Nurses
 Club 1-4, Jr. Play 3.

HELEN ANNE SHERWOOD
 "This gal has her future
 planned and we know it in-
 cludes a man."

LUCILLE M. SHOLES
 "Why love one, love them all."
 Glee Club 1,2, Nurses Club 1.

MILLIE MARIE SHOLES
 "Love many, trust few; always
 paddle your own canoe."
 Glee Club 1-3.

YLVA SJODIN
 "It is a friendly heart that
 has plenty of friends."
 F.T.C. 4, Student Council 4,
 Sr. Play 4, Art Club 4.





LORAINA A. SMITH
 "Don't take life too seriously--you'll never get out alive."



LOUIE SMITH
 "It is better, of course, to know useless things than to know nothing."
 Varsity Club 1,2,3, V. Pres. 4, Student Council 3 V. Pres., 4 President, Draftsmans Club 3, Treasurer 4, Sr. Play 4, Jr. Play 3.



LAURA SUSAN SPENCER
 "The hardest job of all is trying to look busy when you're not."
 F.H.A. 2, Glee Club 1,3, Nurses Club 4.



LINDA STEELE
 "A correct answer is like an affectionate kiss."
 F.H.A. 4, Band 1-4, Pep Band 3-4, Nurses Club 2-4, Library Club 1.



DEAN F. STILWILL
 "I never worry, I don't fret, what I can't remember I just forget."
 F.F.A. 1-4.



EVELYN E. STRATTON
 "Put all your troubles in the bottom of your heart and sit on the lid."
 Bible Club 1-3, Sec. Treasurer 4.

DIANE SUGDEN
 "Men are the spice of the world, so make mine spicy."
 F.H.A. 1,2,4, F.T.C. 1,4, Band 1-4, Pep Band 1-4, Library Club 1, Sr. Play 4, Jr. Play 3, Majorette 2-4, Minstrel Show 1-4.

RITA A. TERBUSH
 "She looks like an angel, she talks like one too, but you never can tell what an angel will do."
 Library Club 1, Annual Staff Asst. Editor 3, Editor 4, Nurses Club 4, 1964 Chapter Sweetheart, 1965 Homecoming Queen.

MICHEAL WALKER
 "The answer to a maiden's prayer."
 Football 4, Basketball 2-4, Baseball 1-4, Track 2-4, Varsity Club 2-4.

TOM WALKER
 "When work interferes with pleasure--quit work."





ALICE WELLS

"Wonders are many, and none is more wonderful than man."
Cheerleading 2, Band 1,2,
Pep Band 1,2, Library Club
1, Glee Club 1, Bible Club
3,4.



JAMES WILL

"He has a way of covering
much ground."
F.F.A. 1-3 Reporter, 4 Pres.
Draftsman Club 2-4.



RICHARD ZAPFE

"If you destroy the leisure
class, you destroy civiliza-
tion."



ERWIEN L. ZAPEE

"A busy person in a quiet
way."
Draftsman Club 1-3

Valedictorian

Salutatorian



JOHANNA KLOCKER

SUSAN GOHS

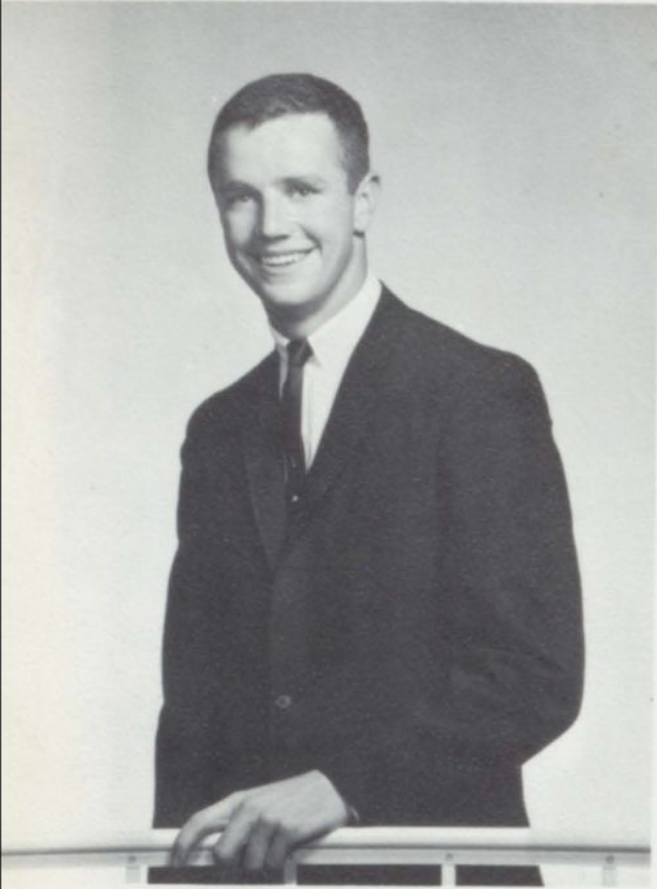
HONOR STUDENTS



FRONT ROW: Left to Right, Susan Gohs, Ylva Sjodin, Lois McKenzie, Dianne Sugden, Sheila Kitchen, Carolyn Schafer, Patty Kontak, Penny Fairfield, Shelley Alfano.

BACK ROW: Diana Ferguson, Johanna Klocker, John Davis, Gale Langford, Jim Plain, Curt Hample, Theresa Karpinski, JoAnn Kowalski.

KING AND QUEEN



ROY GOTHAM



RITA TERBUSH

QUEEN'S COURT

YLVA SJODIN



DIANNE SUGDEN



PENNY FAIRFIELD

