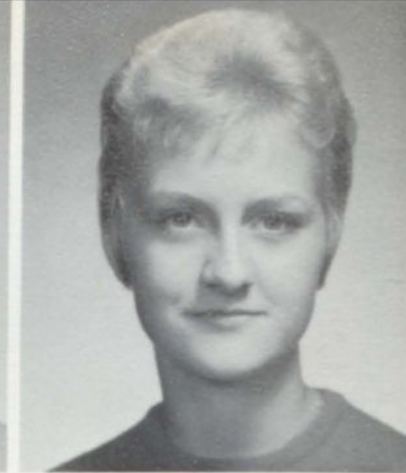


# GRADUATES



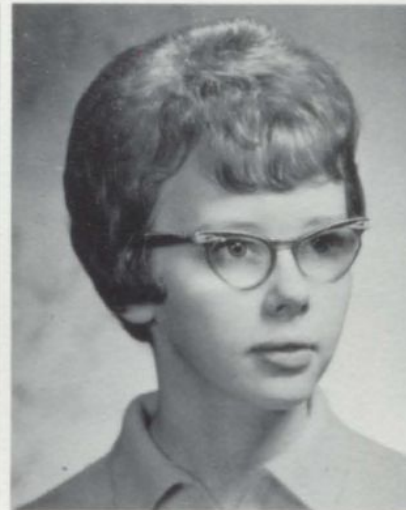
EVA JANE TOMLINSON  
 "There never was a red head that was a saint."  
 F.H.A. 1,2,3,4-Treas.,  
 Glee Club 1,2; Student  
 Council 4; Nurses Club  
 1,2,3; Sr. Play; Junior  
 Play, Class President  
 4.

BERNIECE ARLEA BEACH  
 "If it's fun, I'm for it."  
 F.H.A. 1,2,4; Glee Club 1,2;  
 Student Council 4; Nurses Club  
 2,3; Jr. Play 3; Sr. Play 4;  
 Vice-President 4.

KAREN WRIGHT  
 "What! No boys in heaven.  
 Down Please."  
 F.T.C. 2,3,4; Glee Club 1;  
 Secretary 3,4.

LANA OHMER  
 "She enters everything  
 with zim and zest, espe-  
 cially a stop sign."  
 Cheerleading 1-4;  
 F.H.A. 1,2; F.T.C. 2,3-  
 Treas., 4-V. Pres.;  
 Band 1-4; Pep Band 1,2;  
 Nurses Club 2-4-Pres.;  
 Sr. Play 4; Jr. Play 3;  
 Treasurer 1-4; Major-  
 ette 1-4.

MARTHA (MARTY)  
 BLACKMER  
 "The reward of a thing  
 well done is to have done  
 it."  
 F.H.A. 1,2; Student  
 Council 4-Sec.; Annual  
 Staff 3,4; Sr. Play 4;  
 N.H.S. 3,4-Pres.



DIANE ACKERMAN  
 "An innocent face, but  
 you never can tell."  
 F.H.A. 1-3; Glee Club  
 1; Nurses Club 1-4;  
 Bible Club 4.

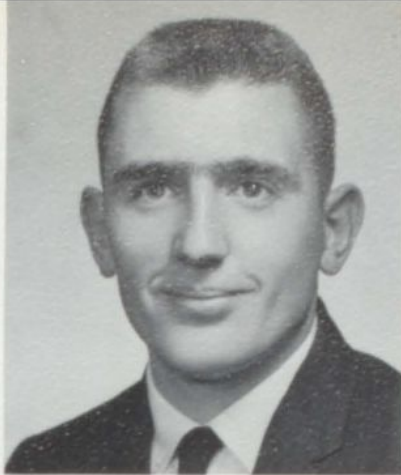
TIM J. ALLEN  
 "Happy am I, from  
 worries I'm free, Why  
 can't others be like me?"  
 Track 1-4; Varsity  
 Club 1-4.

CHESTER G. AUMACK  
 "It isn't what you do, it's  
 what you're caught doing."  
 Football 1-4; Basketball 1-4;  
 Baseball 1,2; Varsity Club 2-  
 4; Sr. Play 4; Jr. Play.

EUGENE J. BEEBE  
 "I like work. It fascinates me.  
 I can sit around and look at it  
 for hours."  
 Football 1,2; Baseball 1,2;  
 F.T.C. 2-4; Sr. Play; Jr. Play.

JIM L. BLACKMER  
 "You don't have to be  
 big to get along in the  
 world."  
 Basketball 1; Baseball  
 1; F.F.A. 1-4.





RUTH M. BODEIS  
 "Her smiles are for fel-  
 lows to trip on."  
 F.H.A. 1-4, Reporter  
 & Parl.; Glee Club 1;  
 Nurses Club 3-4, V.  
 Pres.; Newspaper Staff  
 3.

DALE R. BROWN  
 "Where would the world be  
 without farmers?"  
 Football 1-4; F.F.A. 1,2-Sec.,  
 3-V. Pres., 4-Pres.

LLOYD BROWN  
 "Teachers and classes are his  
 only objection to education."  
 Football 1-4; Baseball 1-3;  
 Varsity Club 3,4; F.F.A. 1,  
 2-Pres.

JEANNETTE H.  
 CARPENTER  
 "There is nothing more  
 silly than a silly laugh."  
 F.H.A. 3,4; Bible Club  
 3,4; Sr. Play 4.



BLANCH E. CLARK  
 "Here's a girl someone  
 should hook, because my  
 goodness, she can cook."  
 Nurses Club 3,4; Glee  
 Club 1; Bible Club 1-4  
 (V.Pres.).

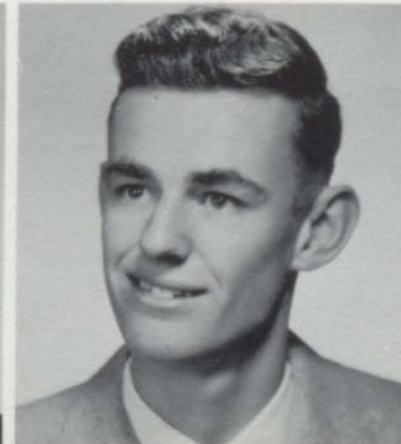
LEE D. CLARK  
 "A mighty man with  
 strong and sinewy arm."  
 Football 1; Basketball  
 1; Track 1; Bible Club.

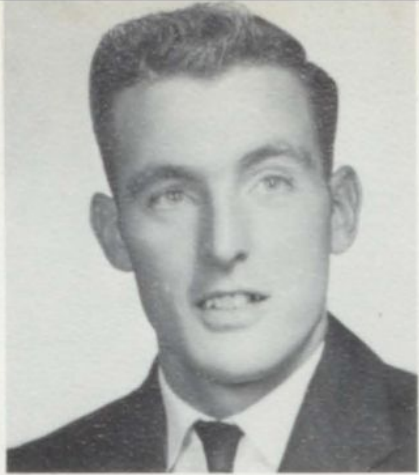
JOHN D. CLEMONS  
 "Sigh no more, ladies.  
 Sigh no more."  
 Football 1-3; Basket-  
 ball 1-3; Baseball 1-3;  
 Varsity Club 1-4.

VIRGIL ELLIS COOPER  
 "I confess, he did it."

JERRY JAMES CORL  
 "There's no future in worry-  
 ing."  
 F.F.A. 1-4; Draftsmen Club  
 3; Bible Club 1,2.

JOOP DE JONGE  
 "He who means no mis-  
 chief does it all."  
 Band 4; Pep Band 4;  
 Student Council 4; Min-  
 strel Show 4.





RICHARD R. DENNIS  
 "Sometimes I just sit  
 and think - mostly I  
 just sit."  
 Baseball 1,2; F.F.A. 1-4.

LARRY R. DIETZ  
 "All men are born free, but  
 some of them get a girl."  
 Football 2; F.F.A. 1-4.

THEODORE F. FACKLER  
 "He who never says anything  
 shall never be quoted."  
 F.F.A. 2 years.

MARIE FOSTER  
 "If school is liberty,  
 give me death."  
 F.T.C. 2-Sec.; Glee  
 Club 1; Student Council  
 2; F.F.A. Chapter  
 Sweetheart 2.



WILLIAM L. FOWLER  
 "Bill is really ambi-  
 tious, proof: his great-  
 est ambition is to find a  
 thousand dollar bill."  
 Football 2,4; Basket-  
 ball 2,3; F.F.A. 1,2,3-  
 Vice-Pres.; 4-Regional  
 Pres., Local Pres.;  
 Draftsman Club 3,4-  
 Parl.

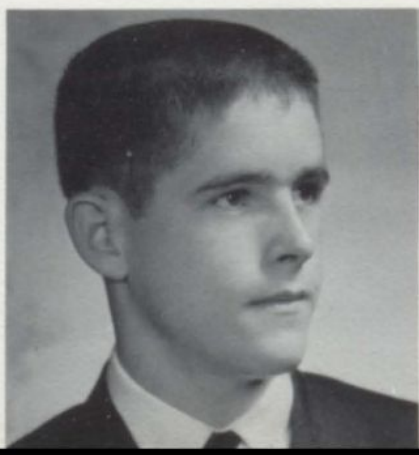
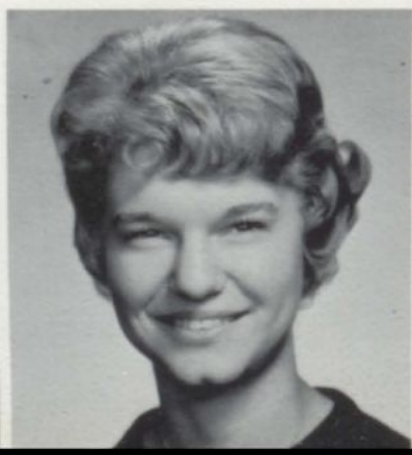
PAULA KAY FOX  
 "Her heart is like the  
 moon, there's a man  
 in it."  
 F.T.C. 2; Glee Club 1.

JAMES L. FREELAND  
 "Full of fun and mis-  
 chief too, doing things  
 he shouldn't do."  
 Basketball 1-3; Base-  
 ball 1-3.

PHYLLIS LEE FRITZ  
 "Kindness wins friends."  
 F.H.A. 1; Band 1-4; Pep Band  
 1,4; Glee Club 1; Student Coun-  
 cil 1; Sr. Play 4.

CLARE D. FRYERS  
 "A lazy boy and a warm bed  
 are hard to part."  
 Football 1; Baseball 1.

FAY E. GORDEN  
 "Never say more than is  
 necessary."  
 Glee Club 1-4; Nurses  
 Club 4.





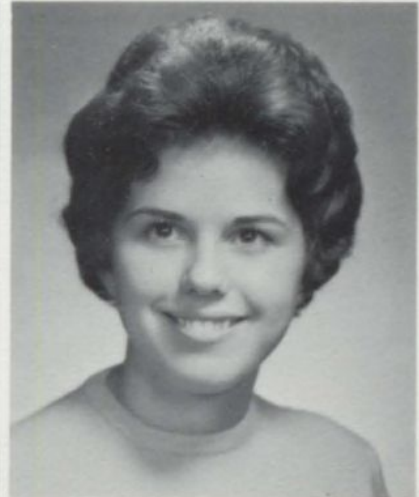
JEANETTE LOIS  
GOTWALT  
"A good excuse is better  
than none."  
F.H.A. 2; F.T.C. 2;  
Glee Club 1-3; Nurses  
Club 2.

RICHARD GREENE  
"School breaks up my whole  
day."  
Football 1-3; F.F.A. 1-4;  
F.T.C. 1.

DAVID HAAS  
"I'm happy, what's wrong with  
the rest of the world."  
F.F.A. 1-4.

KATHLEEN ANN  
HARRIS  
"Full of fun and fancy  
free, that's the way she  
seems to be."  
F.H.A. 1-4; Glee Club  
1,3,4.

JEANNE E. HUNT  
"A quiet tongue shows a  
wise head."  
F.H.A. 1,2,3-Songlead-  
er, 4-Reporter; Glee  
Club 1,2; Nurses Club  
1-4; Jr. Play.



FAITH ANN JONES  
"The girl who makes  
every minute count often  
becomes the woman of  
the hour."  
F.H.A. 1,2,3; F.T.C. 4;  
Glee Club 1; Annual  
Staff 3,4-Editor; Nurses  
Club 1,2,3-Vice Presi-  
dent, 4; 1964 Homecom-  
ing Queen; Jr. Play;  
N.H.S. 3,4.

ALICE J. KILMER  
"This gal has her future  
planned and we know that  
it includes a man."  
Glee Club 1-4; Nurses  
Club 1,2; Bible Club 1-4.

LARRY LAMIMAN  
"Every man has his devilish  
moment."  
Football 1-4; Basketball 1-4;  
Baseball 1-4; Track 4; Var-  
sity Club 2-4; Student Council  
3,4-Pres.; Sr. Play 4; Jr. Play  
3; N.H.S. 3,4.

THOMAS E. LEITNER  
"Anything but a quiet life."  
Football 1,2; Track 1,2; Band  
3,4; Bible Club 1.

RUSSELL J. LOTTER  
"I can resist everything  
except temptation."  
Football 4; Track 3,4;  
Varsity Club 4; F.F.A.  
1-3,4-Treas.





JERRY L. MARLOW  
"Ready, willing, and  
able."  
F.F.A. 1-4.



THOMAS DON MAWDESLEY  
"Honesty is the best policy,  
and is also the key to suc-  
cess."  
Track 4; F.F.A. 1-4; Treas.;  
F.T.C. 1-4; Student Council 1;  
Bible Club 1-4; Pres.



LINDA MCKELLAR  
"She is a quiet girl at times."  
F.H.A. 1-4; Band 1-4; Sr.  
Play 4.



ROBERT E.  
MIDDLETON  
"Too much studying  
weakens the brain."  
Football 1-3; Baseball  
1-4; Varsity Club 4.

CAROL MOSS  
"From the back of the  
room rose the of't heard  
cry, but Professor, I  
don't see why."  
F.H.A. 1; Band 1-4;  
Pep Band 1-3; Glee Club  
1,2; Student Council 3,4;  
Draftsmen Club 3; Sr.  
Play, Jr. Play; N.H.S.  
3,4.



ELAINE OBERLE  
"There are lots of cards  
in the class, but she is  
the only joker."  
Cheerleading 3,4;  
F.H.A. 1,2; F.T.C. 2-4,  
Pres.; Student Council  
2-4; Nurses Club 2-Sec.;  
Jr. Play; Exchange Stu-  
dent 3; F.F.A. Chapter  
Sweetheart 3; Vice  
Pres. 2,3; Library Club  
1,2.



EMERY ORTO  
"Stand in line girls, don't  
push."  
Football 1-4; Track 1,2; Var-  
sity Club 2-4; F.T.C. 3,4; Jr.  
Play 3.

STANLEY NIEZGUCKI  
"Quiet men at times are  
most surprising."  
F.F.A. 1-4.

BARRY D. PEET  
"Quiet, yet witty, he always  
has an answer."  
Baseball 1; Track 1; Drafts-  
men Club 3,4.

MAXINE C. RICH  
"So calm and quiet you  
don't know she's there."  
F.H.A. 4; Glee Club 1,  
4.





LAURA M. ROGERS  
 "Her ways are very kind, and her friends she always has in mind."  
 F.H.A. 1,2; F.T.C. 4; Annual Staff 4; N.H.S. 3,4-Treas.; Newspaper Staff 3.



SHARON L. ROWBOTHAM  
 "If silence were golden she'd be the poorest girl in town."  
 F.H.A. 2-4; Glee Club 4; Nurses Club 3.



JAMES R. SECORD  
 "I've got a hot-rod Ford, and a two dollar bill."  
 Football 1; Basketball 1; Bible Club 4.



SHARON K. SEDDON  
 "Sometimes quiet, sometimes shy, but the rest of her times, OH--MY!"  
 F.H.A. 1-4.

LINDA L. SHERMAN  
 "She burns the midnight oil, but sad to say it's not for toil."  
 F.H.A. 4; Glee Club 1, 3,4.



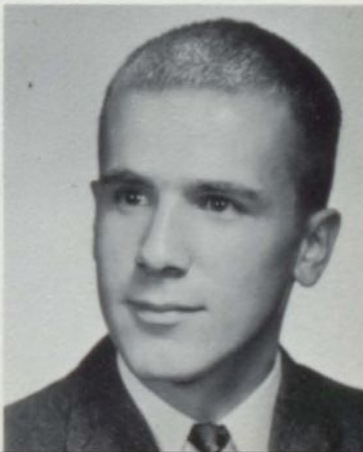
JANET M. SICKLER  
 "The world will wonder what she will do next."  
 F.H.A. 1-3-V.Pres.-4-Pres.; F.T.C. 1-4; Band 1-3; Pep Band 1-4; Nurses Club 4; Sr. Play; Jr. Play.

MARY ANN SPAVEN  
 "Never a dull moment when Mary Ann is near."  
 F.H.A. 1-3-Treas.-4; Glee Club 1; Sr. Play.

GARY STEPHENS  
 "I don't know anything about anything yet, but I may some day."  
 F.F.A. 1-4.

VIRGINIA A. STILLWILL  
 "A closed mouth catches no flies."  
 Band 2-4; Pep Band 2,3; Bible Club 1-4.

LARRY J. STRATTON  
 "Lively, good natured, not a care has he."  
 F.F.A. 1-4.





RITA M. SUGDEN  
 "Dumb-bells, cow-bells, school-bells, wedding-bells."  
 F.F.A. 1-4; F.T.C. 1-3; Band 1-4; Pep Band 1-3; Sr. Play; Jr. Play; Library Club 1,2.



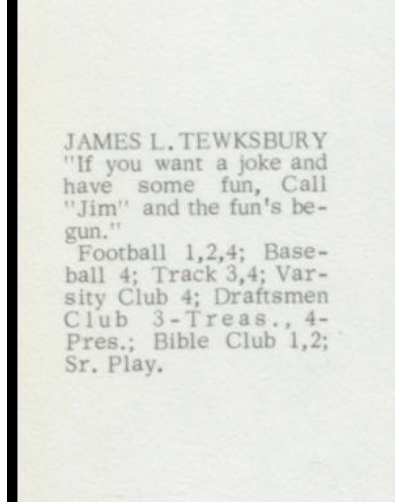
LEOLA L. TERBUSH  
 "As true a friend as one could find."  
 F.T.C. 3,4; Glee Club 1,2; Sr. Play; Newspaper Staff 3; N.H.S. 3,4-Sec.



RAYMOND A. TERBUSH  
 "To worry little, to study less, is my idea of happiness."  
 Football 1,3; Basketball 1,3,4; F.F.A. 1-4.



ROSEMARY TERBUSH  
 "Here is one live wire with connections."  
 F.T.C. 1; Student Council 3; Nurses Club 1.



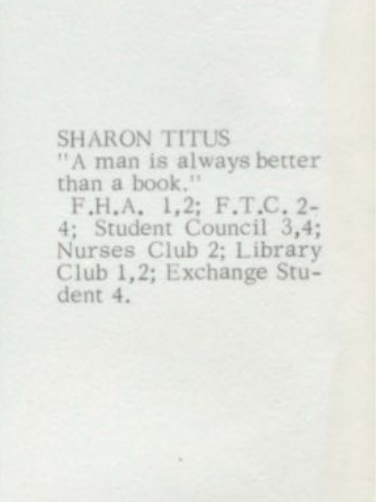
JAMES L. TEWKSBURY  
 "If you want a joke and have some fun, Call 'Jim' and the fun's begun."  
 Football 1,2,4; Baseball 4; Track 3,4; Varsity Club 4; Draftsmen Club 3-Treas., 4-Pres.; Bible Club 1,2; Sr. Play.



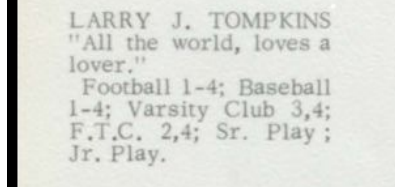
THOMAS P. TOPHAM  
 "He knows that football isn't the only place a good line is needed."  
 Football 1-4; Basketball 1-4; Baseball 1-4; Track 2-4; Varsity Club 2,3,4-Pres.; F.T.C. 2-4; Sr. Play; Jr. Play.



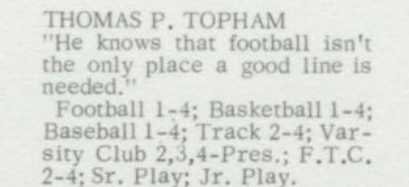
JUDY ANN WALSH  
 "Ambition has no rest."  
 F.H.A. 1-4; Glee Club 1,2; Nurses Club 1-4; Bible Club 1,2.



SHARON TITUS  
 "A man is always better than a book."  
 F.H.A. 1,2; F.T.C. 2-4; Student Council 3,4; Nurses Club 2; Library Club 1,2; Exchange Student 4.



LARRY J. TOMPKINS  
 "All the world, loves a lover."  
 Football 1-4; Baseball 1-4; Varsity Club 3,4; F.T.C. 2,4; Sr. Play; Jr. Play.



JAMES R. WENTA  
 "My memory is what I forget with."  
 Football 1-4; Basketball 2; Baseball 3; Track 1,2; Varsity Club 3,4; F.T.C. 3; Band 3; Sr. Play; Jr. Play.







JOHN WILKINS  
 "Thinking is but an idle  
 waste of thought."  
 F.F.A. 1-4.

MARIE WILLIAMS  
 "Never change when love has  
 found it's home."  
 F.H.A. 1; Band 1-4; Pep Band  
 2-4.

DEAN R. WINGERT  
 "Chase me girls I'm full of  
 fun and frolic."  
 Band 1-4; Pep Band 1,2,4;  
 Draftsmen Club 3,4; Bible  
 Club 1,2; Sr. Play.

JUDY M. YORK  
 "Doing anything is  
 trouble, but I always  
 seem to have trouble  
 doing anything."  
 Glee Club 1.2.

COMMENCEMENT



PRACTICE



## Valedictorian Salutatorian

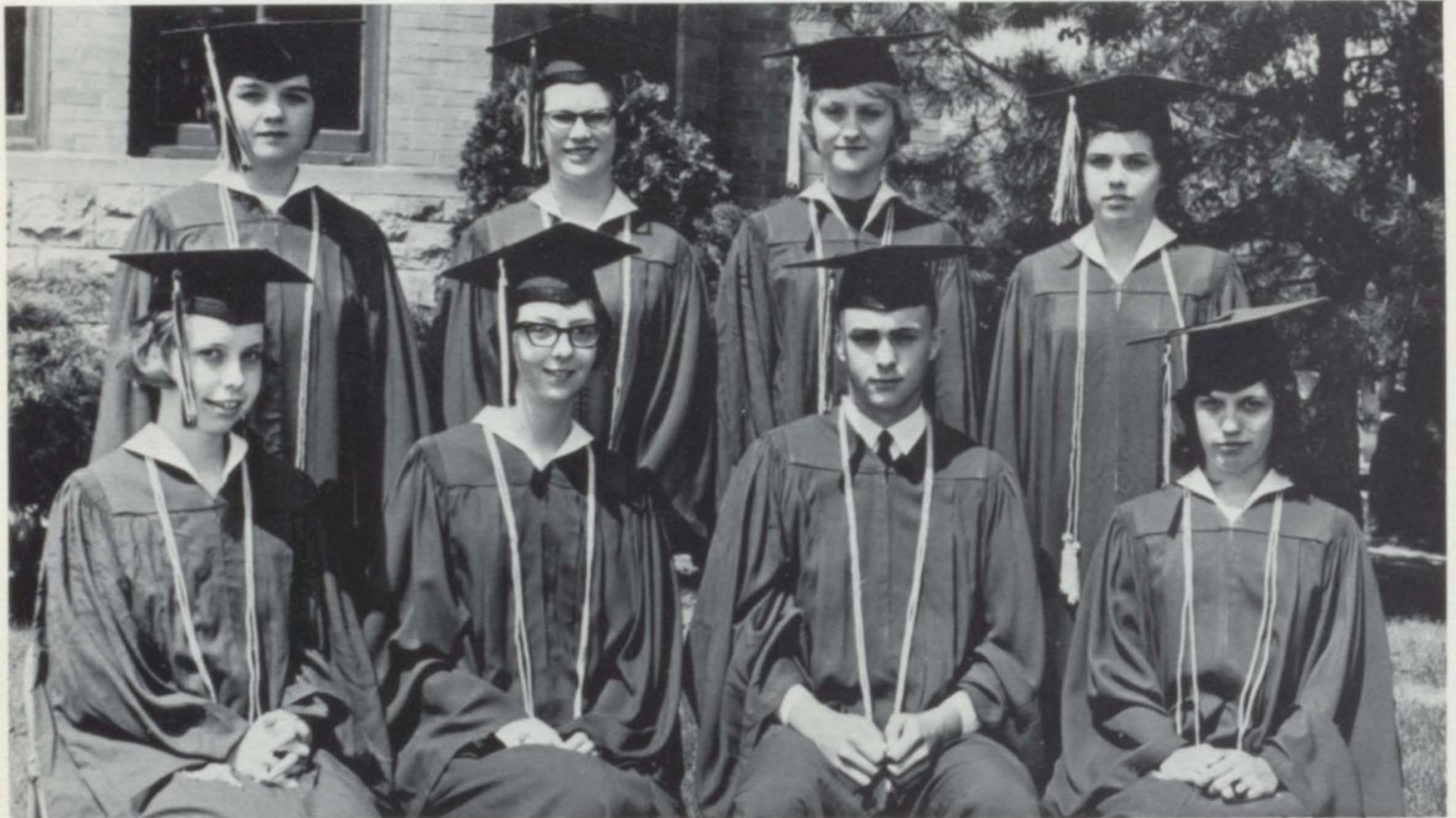


MARTHA (MARTY) BLACKMER



FAITH ANN JONES

## Honor Students



FRONT ROW: Left to Right, Carol Moss, Laura Rogers, Larry Lamiman, Martha Blackmer. BACK ROW: Leola TerBush, Janet Sickler, Lana Ohmer, Faith Ann Jones.

King Queen



TOM TOPHAM



FAITH ANN JONES

Queen's Court

LANA OHMER

PAULA FOX

RITA SUGDEN



