



Washington Monument

MAYVILLE HIGH SCHOOL

Mayville, Michigan  
Judy Osowski, Editor  
Andrea TerBush  
Sally Ulshafer  
Marty Blackmer  
Faith Ann Jones  
Pat Stout

Through The Years



LINDA SARLES  
President  
"Everybody's friend, nobody's enemy."

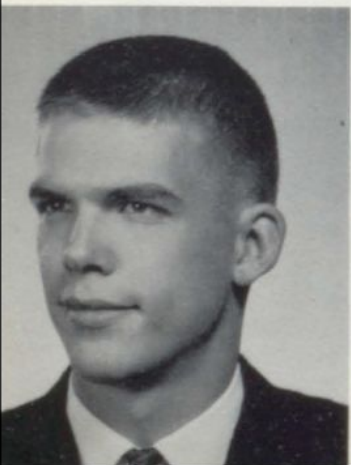
THOMAS WELKE  
Vice President  
"All great men are dead or dying, and I don't feel so well myself."

MAUREEN SHAY  
Secretary  
"Every girl has her devilish moments."

LYLE FRYERS  
Treasurer  
"I know a lot, but I can't think of it."

BARBARA CHAPIN  
Student Council Representative  
"Maybe I didn't catch on, but it was funny."

ALBERT (Nick) ALFANO  
"Why should the devil have all the good times."



WILLIAM ASHER  
"He has a pleasant way about him that has made him many friends."

MARSHA AUDINET  
"So calm and quiet you don't know she's there."

JANET BROOMFIELD  
"Generally speaking -- She's generally speaking."



BONNIE SMITH BROWN  
"A gleam in her eye - for a certain guy."

DOUGLAS BROWN  
"A man who blushes is not quite a brute."

JEAN BROWN  
"What I do concerns me, not what people think."

VALI DONNA BUHL  
"It isn't what you do, it's what you get away with."

JUNIATA BYRD  
"Let me rest from all this labor."

LARRY COLOSKY  
"Why should we do all the work, when the teachers get paid."



GLORIA DEGROW  
"These Obstinate Teachers will never agree with me."

LIES de JONGE  
"It is a friendly heart that has plenty of friends."

JEAN FOWLER  
"Very sweet and crazy to meet."



FLOYD FRIDAY  
"Sometimes I sit and think,  
sometimes I just sit."

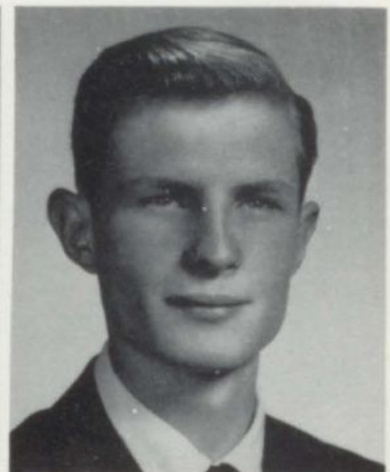
GAYLE GARNSEY  
"Friendly, likeable, forever  
gay, we're sure she'll always  
stay that way."

CAROL GRIMSHAW  
"She does her part with a  
willing heart."

BILL HOOSE  
"School breaks up my whole  
day."

DANNY HORMEL  
"Blushes may come and blush-  
es may go, but freckles hang  
on forever."

BILL IVERSON  
"I like work. It fascinates me.  
I can sit around and look at  
it for hours."



MARTHA KILMER  
"Her ways are ways of  
pleasantness, and all her paths  
are peace."

RONALD KOWALSKI  
"Convince a man against his  
will, he holds the same opinion  
still."

ALICE LADD  
"The reward of a thing well  
done is to have done it."



MARILYN LOUKS  
 "Women of few words are best."

PATRICIA LYNCH  
 "Her method is simple, her weapon - a dimple."

DALE LYONS  
 "Live while you may, for death is quite permanent."

LYNNE MAIERS  
 "A gentle voice is always admired."

DENNIS MANWELL  
 "I don't know what education could do, because I never tried it."

ELAINE MIDDLETON  
 "Always quiet, never loud, just to know her we are proud."



RALPH MOORE  
 "After 13 years of working and slaving, I'm finally up for my unemployment compensation."

NANCY MYERS  
 "Why take life seriously? You'll never get out alive."

LEO NIEZGUCKI  
 "My Ford is my Chariot, I shall not walk."



JUDY OSOWSKI  
"An innocent face, but you never can tell."

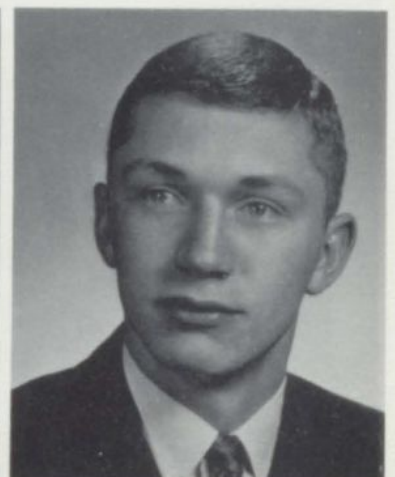
ROLLIE PALMETER  
"Whenever he feels like exercising he sits down 'til the feeling goes away."

DONALD PETERSON  
"A man with a three decker brain."

MARIE PHELPS  
"What! No boys in Heaven!  
Then just leave me here."

ROLLO PICKENS  
"Why show people I'm smart  
- I might have to work."

LARRY POLLION  
"He isn't a wolf; it's just  
the way he says hello-o-o-o."



GARY PUTMAN  
"Bashful? We're not so sure."

GLENN SCHLATTMAN  
"Silence is Wisdom - I am silent."

WOLFRAM SCHULTZ  
"Few words, many deeds."



SUE SEBERT  
 "I don't know where I'm going,  
 but I'm on my way."

ROBERT SHEPHARD  
 "Not too serious, not too gay;  
 a swell guy in every way."

MARY LOU SHOLES  
 "Men are for the birds -  
 peep, peep!"

RUTH GROSS SHOLES  
 "On books my time I cannot spend."

NANCY SMITH  
 "In school I am quiet, outside  
 I'm a riot."

ANDREA PAULETTE  
 TERBUSH  
 "She and books will always  
 be buddies."



BETTY LOU THORNTON  
 "Don't you laugh; the big oak  
 was a little nut first."

MERLE DALE TURNER  
 "There may be greater men,  
 but I doubt it."

SALLY GOUINE ULSHAFFER  
 "Full of fun and mischief too,  
 doing things she shouldn't do."



DIANNE WALKER  
 "Never loud, always quiet;  
 maybe some of us should try  
 it."

SYLVIA WASIELEWSKI  
 "Like a circle ending never,  
 does her mouth go on for-  
 ever?"

LEWIS WHITE  
 "I stand on the brink of a  
 great career, will somebody  
 please shove me off?"

## National Honor Society



FIRST ROW: Nancy Smith, Judy Osowski, Tricia Lynch, Faith Ann Jones, Andrea TerBush, Leola TerBush, Gayle Garnsey. SECOND ROW: Francene Smith, Sponsor; Laura Rogers, Marilyn Louks, Maureen Shay, Marty

Blackmer, Carol Grimshaw. THIRD ROW: Larry Lamiman, Glenn Schlattman, Donald Peterson, Robert Shephard, Wayne Brown, Sponsor.



# Senior Directory

NICK ALFANO - Football 1,2,3,4; Basketball 1,3; Track 1,2,3,4; (All Stars-3); Varsity Club 2,3,4; F.F.A. 1; F.T.A. 3,4; Senior Play 4; Junior Play 3; V. Pres. F.T.A. 4; Sec.-Treas. Varsity Club 4.

BILL ASHER - Football 3; Basketball 3; Baseball 2; Track 3; Varsity Club 2.

MARSHA LEE AUDINET - Glee Club 1,2,3,4; Nurses' Club 4.

JANET BROOMFIELD - F.H.A. 1,2,3,4; F.T.A. 3,4; Band 1,2,3,4; Pep Band 3; Nurses' Club 1,2,3,4; Bible Club 1; Library Club 1,2,3; Minstrel Show 1,2; Senior Play 4; Junior Play 3.

BONNIE BROWN - Glee Club 2,3; Nurses' Club 2,3,4; Library Club 1,2-Treas.; Minstrel Show 2.

DOUGLAS BROWN - F.T.A. 3,4; Band 1,2,3,4; Pep Band 3,4; Student Council 1,3; Minstrel Show 2,4; Senior Play 4; Junior Play 3; Pres. 3; S.C.R. 1; Student Council Play 3.

JEAN BROWN - Glee Club 3,4; Nurses' Club 4.

VALI DONNA BUHL - F.H.A. 2,3; Nurses' Club 4; Bible Club 1; Library Club 1,2,3.

JUANITA BYRD - F.H.A. 1; Glee Club 3,4; Nurses' Club 4.

BARBARA CHAPIN - F.T.A. 3; Band 1,2,3,4; Student Council 4; Newspaper Staff 2; Annual Staff 2; Minstrel Show 2; Senior Play 4; National Honor Society 4.

LARRY COLOSKY - F.F.A. 1,2; F.T.A. 3,4.

GLORIA DEGROW - F.H.A. 2,3,4; F.T.A. 2,3,4; Band 1,2,3,4; Student Council 2,4-Treas.; Newspaper Staff 3; Minstrel Show 1,2,4; Senior Play 4; Junior Play 3; Treas. 1; Pres. 2; Exchange Student; National Honor Society 4.

LIES de JONGE - F.H.A. 4; F.T.A. 4; Band 4; Pep Band 4; Student Council 4; Nurses Club 4-Treas.; Minstrel Show 4; Senior Play 4; Student Council Play 4.

JEAN FOWLER - F.H.A. 4; F.T.A. 3,4; Band 1,2; Nurses' Club 1,2,3,4-Pres.; Senior Play 4.

FLOYD FRIDAY - Football 1,2,3,4; Track 4; Varsity Club 3,4; Future Draftsman's Club 4-Pres.

LYLE FRYERS - Football 1; Basketball 1; Track 1; Treas. 3,4; Junior Play 3.

GAYLE GARNSEY - F.T.A. 2,3,4-Sec; Bible Club 1,2,3; Minstrel Show 4; Senior Play 4; Junior Play 3; National Honor Society 4-Pres.; DAR Good Citizen Award 4.

CAROL GRIMSHAW - F.H.A. 1; F.T.A. 3; Band 1,2,3,4; Pep Band 2; Student Council 3-V. Pres., 4-Pres.; Minstrel Show 2; Junior Play 3; Student Council Play 3,4; National Honor Society 4.

BILL HOOSE - Football 1; F.F.A. 1; Library Club 1.

DANNY HORMEL - F.T.A. 4; Library Club 3.

BILL IVERSEN - Football 1; Basketball 1; Band 1,2,3,4; Pep Band 1; Bible Club 1,2; Future Draftsman's Club 4.

MARTHA KILMER - Glee Club 1,2,3,4; Bible Club 1,2,3,4-Pres. 3 & 4; Senior Play 4; Junior Play 3.

RONALD KOWALSKI - Football 1; F.F.A. 1,2,3,4.

ALICE LADD - Nurses' Club 3,4; Library Club 3.

MARILYN LOUKS - Glee Club 1,2,3; Nurses' Club 3,4; Bible Club 1; National Honor Society 4.

PATRICIA MAE LYNCH - Cheerleading 1,2,3,4; F.H.A. 2,3-V. Pres.; 4-Pres.; F.T.A. 3,4; Band 1, 2,3,4; Pep Band 1,2; Annual Staff 3; Bible Club 1,2; Minstrel Show 2,4; Senior Play 4; Majorette 3,4; Homecoming Queen 4; National Honor Society 4.

DALE LYON - Football 2,3,4-Co-Captain; Varsity Club 3,4-Pres.; F.T.A. 4.

LYNNE MAIERS - Glee Club 2,3,4; Nurses' Club 3-Treas.; 4-Sec.

DENNIS MANWELL - Bible Club 1,2,3,4.

ELAINE MIDDLETON - Glee Club 1,2; Bible Club 1,2,3.

# Senior Directory

- RALPH MOORE - Football 1,2; Basketball 1,2,3; Track 1; Baseball 1,2; F.F.A. 1; Future Draftsman's Club 4.
- NANCY MYERS - Glee Club 1,2; Nurses' Club 4; Library Club 1,2,3.
- LEO NIEZGUCKI - F.F.A. 1,2,3,4.
- JUDY OSOWSKI - Annual Staff 3,4-Editor; Nurses' Club 3,4; Library Club 3; National Honor Society 4.
- ROLLIE PALMETER - Baseball 1,3,4; F.F.A. 1,2,3; F.T.A. 2,3.
- DONALD PETERSON - Track 3; F.T.A. 4; Band 1,2,3,4; Pep Band 3,4; Minstrel Show 4; Senior Play 4; Junior Play 3; National Honor Society 4.
- MARIE PHELPS - F.H.A. 1; Band 1,2; Pep Band 2; Glee Club 2,3; Nurses' Club 4; Library Club 1,2,3-Sec.; Minstrel Show 2.
- ROLLO PICKENS - Basketball 1,2; F.F.A. 1,2,3,4-Pres.
- LARRY POLLION - Football 4; Basketball 1,2,3,4; Track 3,4; F.T.A. 3,4; Library Club 2,3.
- GARY PUTMAN - Football 1; Basketball 1,2; Band 1,2,3,4; Senior Play 4; Junior Play 3.
- LINDA SARLES - Cheerleading 1,2,3,4; F.H.A. 1,2; F.T.A. 2,3,4; Band 1,2,3,4; Pep Band 1,2,3; Student Council 1,2,3,4; Newspaper Staff 3-Assist. Editor; Annual Staff 3; Cheerleaders Club 1,2,3,4-Treas.; Student Council Play 2,3,4; Junior Play 3; Majorette 2,3,4; Exchange Student 3; Pres. 4; Pep Club 3; V. Pres. 1; S.C.R. 2,3.
- GLEN SCHLATTMAN - F.F.A. 1,2.
- WOLFRAM SCHULTZ - Football 4; Track 4; Student Council 4.
- SUE SEBERT - Glee Club 1,2; Nurses' Club 4; Bible Club 1.
- MAUREEN SHAY - Band 1,2,3,4; Pep Band 1; Senior Play 4; Sec. 2,4; National Honor Society 4.
- ROBERT SHEPHARD - Football 1,2,3,4; Basketball 1,2,3,4; Baseball 1,2,3,4; Varsity Club 3,4-V. Pres.; F.T.A. 3,4-Pres.; Senior Play 4; National Honor Society 4.
- MARY LOU SHOLES - Glee Club 1,2,3,4.
- RUTH SHOLES - Glee Club 2,3; Nurses' Club 1,2; Bible Club 1,2; Library Club 1,2,3.
- NANCY SMITH - Nurses' Club 2,3; Library Club 1,2; National Honor Society 4.
- ANDREA TERBUSH - Glee Club 1,2,3; Annual Staff 4; Senior Play 4; National Honor Society 4; Treas. 2; Sec. 3.
- BETTY \*LOU THORNTON - Glee Club 1,2,3; F.H.A. 2; Bible Club 1; Minstrel Show 2; Senior Play 4.
- DALE TURNER - Football 1,2,3,4; Basketball 1; Baseball 1,2; Track 1; Varsity Club 2,3,4; Band 1,2,3,4; Minstrel Show 1; Senior Play 4; Junior Play 3.
- SALLY GOUINE ULSHAFFER - Annual Staff 2,3,4-Assist. Editor; Newspaper Staff 2; Bible Club 1.
- DIANNE WALKER - Nurses' Club 3,4; Bible Club 1; Library Club 3.
- SYLVIA WASIELEWSKI - F.T.A. 1; Nurses' Club 1,2,3,4; Library Club 1,2,3.
- TOM WELKE - Basketball 1; F.F.A. 1,2,3,4-Sen. & Rep.; Band 1,2,3,4; Pep Band 1,2,4; Student Council 1,2,3,4; Minstrel Show 2; Student Council Play 2.
- LEWIS WHITE - F.F.A. 1,2,3,4; Senior Play 4.

